

GENERAL NOTES:

- THIS PRODUCT HAS BEEN TESTED, ANALYZED & APPROVED FOR DESIGN PRESSURES NOT TO EXCEED THOSE SHOWN IN THE "ALLOWABLE DESIGN PRESSURE TABLE(S)".
- OPENINGS, BUCKING & BUCKING FASTENERS MUST BE PROPERLY DESIGNED & INSTALLED TO TRANSFER WIND LOADS TO THE STRUCTURE.
- ALL HARDWARE & FASTENERS SHALL BE IN ACCORDANCE WITH THESE DRAWINGS & SHALL NOT VARY UNLESS SPECIFICALLY MENTIONED ON THE DRAWINGS. SPECIFIED ANCHOR EMBED TO BASE MATERIAL SHALL BE BEYOND WALL FINISH OR STUCCO.
- THIS PRODUCT HAS BEEN DESIGNED IN ACCORDANCE WITH AND MEETS THE REQUIREMENTS OF THE FLORIDA BUILDING CODE (FBC) INCLUDING HIGH VELOCITY HURRICANE ZONES (HVHZ) & IS LARGE MISSILE IMPACT RATED.
- IMPACT SHUTTERS ARE NOT REQUIRED WITH THIS PRODUCT.
- ALL ANCHORS SECURING PRODUCT FRAMES TO PRESSURE TREATED BUCKS OR WOOD FRAMING SHALL BE CAPABLE OF RESISTING CORROSION CAUSED BY THE PRESSURE TREATING CHEMICALS IN THE WOOD.
- DETERMINE THE POSITIVE & NEGATIVE DESIGN LOADS TO USE WHEN REFERENCING THESE DOCUMENTS IN ACCORDANCE WITH THE GOVERNING CODE AND GOVERNING WIND VELOCITY. FOR WIND LOAD CALCULATIONS IN ACCORDANCE WITH THE FLORIDA BUILDING CODE, A DIRECTIONALITY FACTOR OF $K_d = 0.85$ MAY BE APPLIED PER THE ASCE-7 STANDARD.
- MATERIALS, INCLUDING BUT NOT LIMITED TO STEEL SCREWS, THAT COME INTO CONTACT WITH OTHER DISSIMILAR MATERIALS SHALL MEET THE REQUIREMENTS OF FLORIDA BUILDING CODE.
- TO THE BEST OF OUR KNOWLEDGE, THE PRODUCT SHOWN HEREIN IS QUALITY ASSURED BY A FLORIDA STATE APPROVED CERTIFICATION/QA ENTITY & SHALL BE LABELED IN ACCORDANCE WITH THE FBC AND THE FLORIDA DEPARTMENT OF BUSINESS & PROFESSIONAL REGULATION SPECIFICATIONS. THESE DRAWINGS SHOW ALL APPLICABLE ELEVATION, COMBINATION, INSTALLATION & COMPARATIVE ANALYSIS CONDITIONS AS DETERMINED THROUGH TESTING & ENGINEERING RATIONAL ANALYSIS. PRODUCT ASSEMBLY SHALL BE IN ACCORDANCE WITH THESE DRAWINGS, THE MANUFACTURER'S QUALITY ASSURANCE SPECIFICATIONS & TESTING REPORTS.
- CERTIFICATION OF THIS PRODUCT SHALL BE CONSIDERED VOID IF IT IS INSTALLED WITHOUT A BUILDING PERMIT FROM THE APPLICABLE LOCAL BUILDING DEPARTMENT OR IF IT IS INSTALLED BY ANYONE OTHER THAN A LICENSED CONTRACTOR EXPERIENCED WITH INSTALLATIONS OF THIS TYPE OF PRODUCT.

CORNER & FRAME END CONSTRUCTION FOR SHEET 1 ELEVATIONS:

FRAME HEAD CORNER: HEAD IS SQUARE CUT, BUTTED TO SIDE, FASTENED WITH THREE (3) NO. 12 X 1" S.S. PHTFS FASTENERS THROUGH THE SIDE MEMBER INTO THE HEAD MEMBER SCREW SPLINES & SEALED WITH SILICONE.
FRAME SILL CORNER: SILL IS SQUARE CUT, BUTTED TO SIDE, SECURED TO THE SIDE MEMBER USING A PIVOT ASSEMBLY OR STEEL CLIP, FASTENED WITH THREE (3) NO. 12-24 X 3/8" FHMS AT THE FRAME & TWO (2) NO. 12-24 X 3/8" FHMS AT THE SILL, & SEALED WITH SILICONE.
DOOR PANEL CORNERS: VERTICAL STILES RUN THROUGH AND ARE SECURED TO THE RAILS AT THE TOP & BOTTOM WITH 1/4" THICK EXTRUDED CHANNELS. EACH CHANNEL IS FASTENED TO THE STILE & RAIL WITH 1/4-20 X 3/4" PHMS & 3/16" THICK STEEL NUT PLATES. THE INTERSECTION OF EACH CORNER JOINT WAS WELDED WITH A 1/2" DIA. PLUG WELD AND A 1 1/8" LONG FILLET WELD AT BOTH WEBS OF THE RAIL.

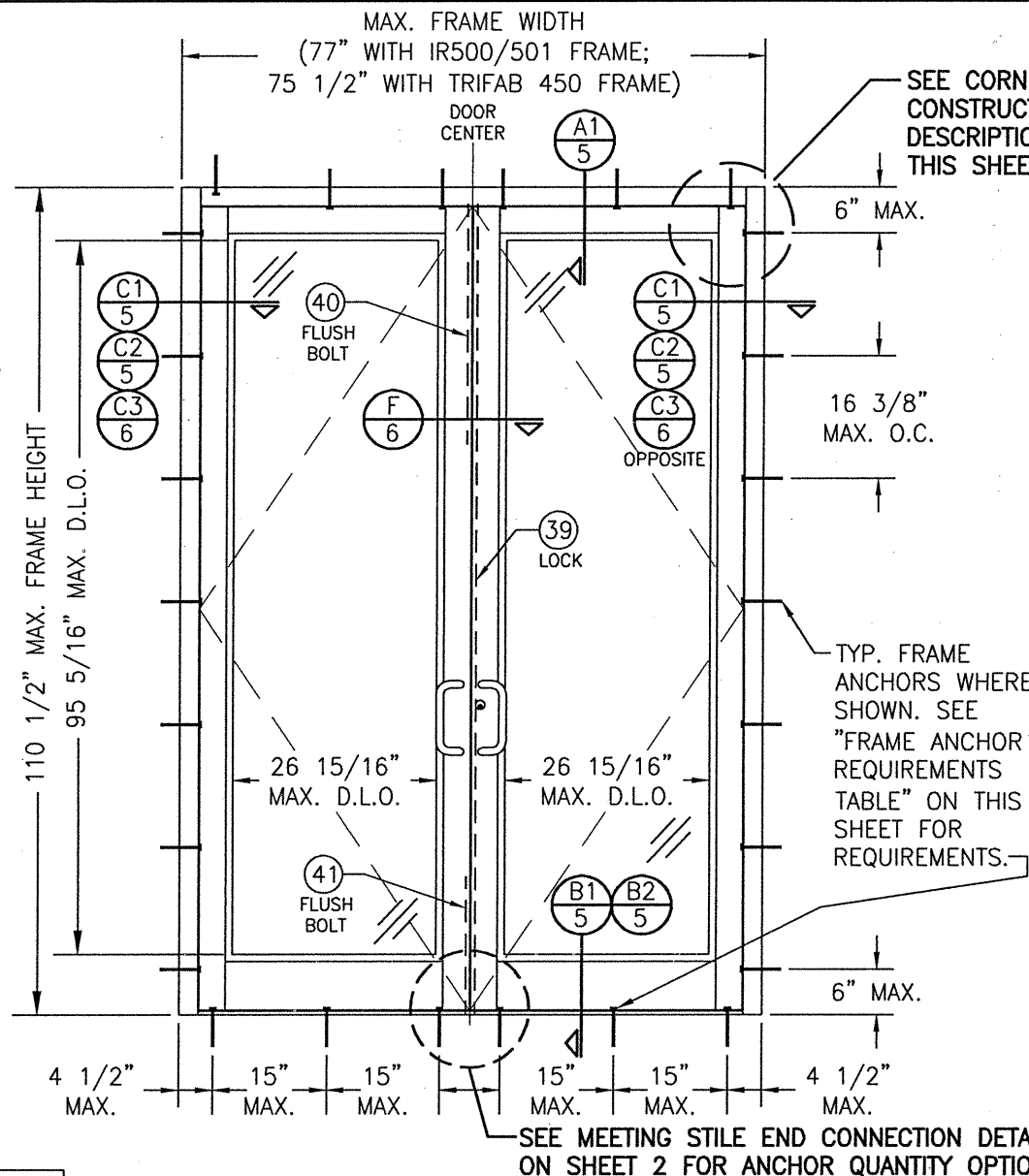
EVALUATION OF THIS PRODUCT IS BASED ON APPLICABLE STANDARDS AND/OR INFORMATION & RESULTS FROM APPLICABLE TEST REPORTS. THE FLORIDA BUILDING CODE VERSION CONSIDERED WITH THIS EVALUATION WAS THAT IN FORCE AT THE TIME OF THE EVALUATION. IN THE EVENT OF CODE VERSION CHANGES/UPDATES OR IN THE EVENT THAT NEW OR ADDITIONAL TESTING IS COMPLETED ON THIS PRODUCT, PRIOR TO STATING CODE COMPLIANCE WITH THE STATE, THE MANUFACTURER SHALL CONFIRM WITH THE EVALUATION ENGINEER OF RECORD THAT EVERYTHING SPECIFIED HERE-IN IS CURRENT WITH ALL CURRENT TESTING, CODES AND APPLICABLE STANDARDS.

FRAME ANCHOR REQUIREMENTS TABLE

FRAME SHEAR SCREWS

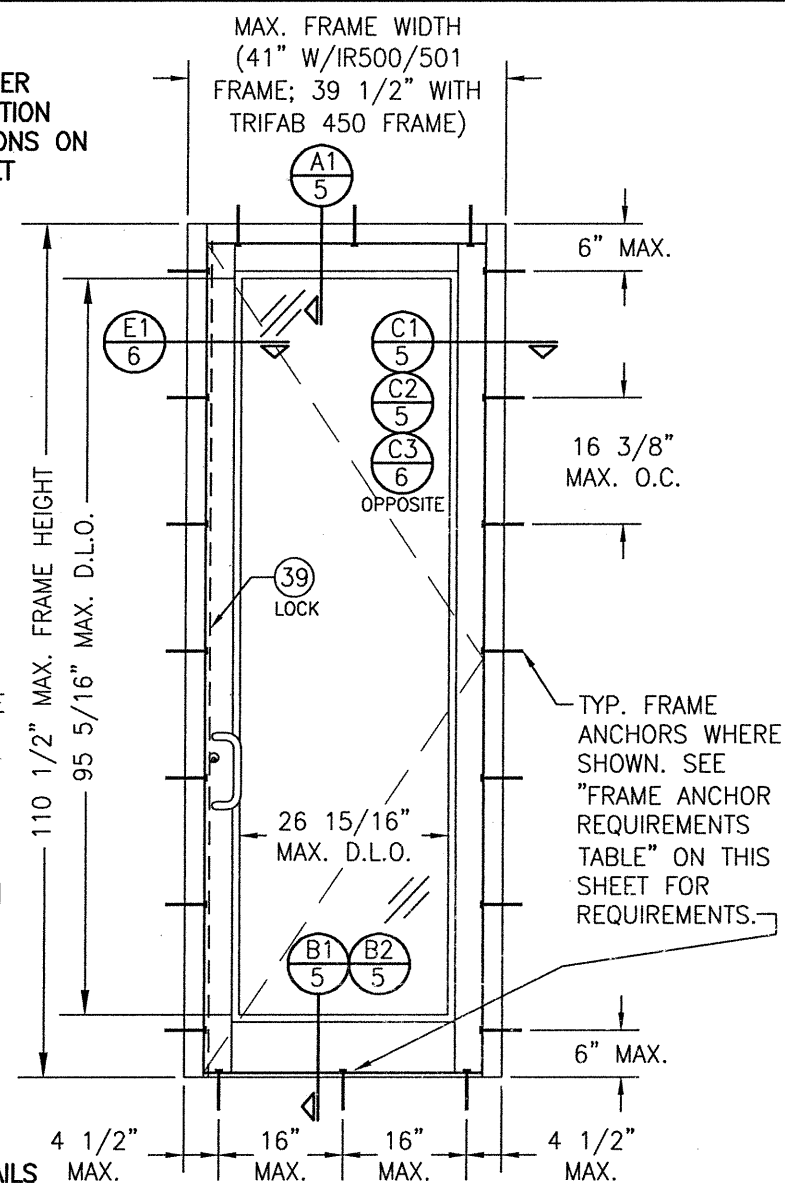
ANCHOR TYPE	OPENING TYPE (SUBSTRATE)	FRAME/CLIP/NAIL FIN TO OPENING FASTENER TYPE	MINIMUM EMBED	MINIMUM EDGE DIST.
A	(4) MIN. 2X6 WOOD FRAME OR BUCK (MIN. GR. 3 & G=0.55)	NO. 12 SMS OR WOOD SCREW	1 1/4"	3/4"
B	MIN. 18 GA. 33 KSI METAL STUD	(2) NO. 12 GR. 5 SELF TAP/DRILLING SCREW	FULL	1/2"
C	MIN. 0.22" THICK A36 STEEL	(2) 1/4-14 SELF DRILL/TAPPING SCREW	FULL	1/2"
D	MIN. 0.1" THK 6063-T6 ALUM. /CURTAIN WALL	(2) 1/4-14 SELF DRILL/TAPPING SCREW	FULL	1/2"
E	(3) C-90 CMU/3000 PSI CONCRETE	(1) 1/4" CONCRETE SCREW	1 3/4"	2"

- CONCRETE SCREWS SHALL BE ELCO ULTRACONS (C.S.), ELCO CRETE-FLEX (S.S.), ITW RAMSET/RED HEAD TAPCONS (C.S. OR S.S.) OR HILTI KWIK-CON II (C.S OR S.S.).
- SELF DRILLING & SELF TAPPING SCREWS SHALL BE MIN. GRADE 5 CORROSION RESISTANT STEEL
- C-90 CMU IS ONLY APPLICABLE AT SIDES OF DOOR OPENING (NOT APPLICABLE TO HEAD & SILL)
- WOOD FRAME OR BUCK MEMBERS MAY BE RIPPED DOWN TO A MINIMUM 4 1/2" DEPTH.



EXTERIOR ELEVATION: DOUBLE DOOR WITH IR-500/501 STORE FRONT FRAMING & STANDARD INSTALLATION

SCALE: 1/2" = 1'-0"
(APPLICABLE WITH ALL HINGE TYPES)



EXTERIOR ELEVATION: SINGLE DOOR WITH IR-500/501 STORE FRONT FRAMING & STANDARD INSTALLATION

SCALE: 1/2" = 1'-0"
(APPLICABLE WITH ALL HINGE TYPES)

LOCK OPTION 1 IS SHOWN IN THESE ELEVATIONS. LOCK OPTIONS 2, 3 & 4 ALSO APPLY. SEE ELEVATIONS ON SHEET 2 FOR LOCK OPTIONS 2, 3 & 4.

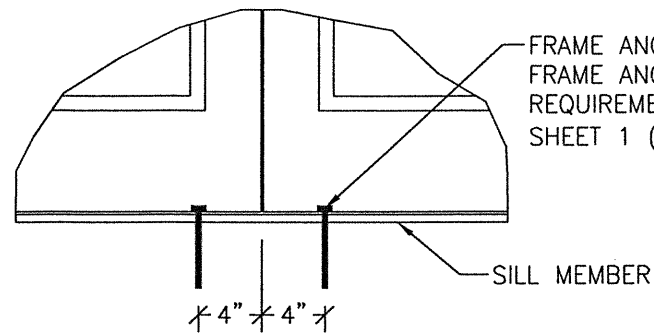
ALLOWABLE DESIGN PRESSURE

+/-65 PSF

- WATER RATING NOTE:** THESE DOOR UNITS ARE NOT APPROVED FOR USE WHERE WATER INFILTRATION RESISTANCE IS REQUIRED BY THE DOOR UNLESS ONE OF THE FOLLOWING APPLIES:
- UNITS ARE INSTALLED IN NON-HABITABLE AREAS WHERE THE UNIT & THE AREA ARE DESIGNED TO ACCEPT WATER INFILTRATION.
 - UNITS ARE INSTALLED AT A LOCATION PROTECTED BY A CANOPY OR OVERHANG WHERE-BY THE OVERHANG(OH) RATIO IS EQUAL TO OR MORE THAN 1.0 PER FBC.
 - IF THE DOOR IS INSTALLED IN AN IR-501 SYSTEM THAT HAS THE HEAD JAMB WEATHER SEAL SHOWN IN SECTIONS A1 OR G1, HAS A SILL & SILL DAM ASSEMBLY AS SHOWN IN SECTION B2, IF A DOUBLE DOOR, HAS MEETING STILE COVERS AS SHOWN IN SECTION F, USES THE 2 POINT LOCK PART NUMBERS 40 & 41 AT INACTIVE PANELS, USES THE 3-POINT LOCK UNDER PART NUMBER 39 AT ACTIVE PANELS AND USES THE GEAR OR BUTT HINGES UNDER PART NUMBER 36 OR 37.

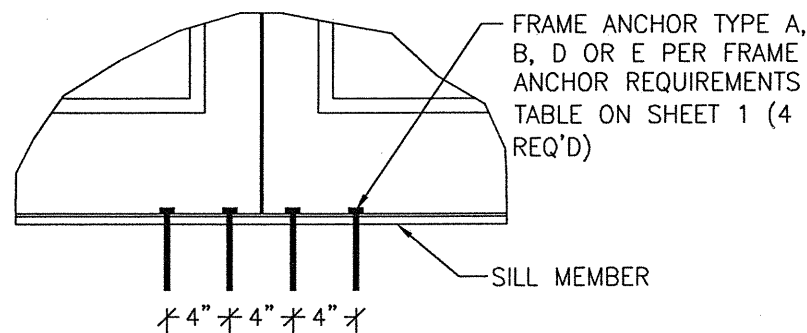
THESE DRAWINGS ARE APPLICABLE ONLY TO THE PRODUCT SPECIFIED. THEY MAY NOT BE USED FOR THE ASSEMBLY AND/OR INSTALLATION OF ANY OTHER PRODUCT NOR MAY THEY BE USED FOR RATIONAL AND/OR LOCAL APPROVAL OF ANY PRODUCT NOT PRODUCED BY THE MANUFACTURER STATED ON THESE DRAWINGS.

DRAWN BY: W.R.M.		CHECKED BY: W.W.S.	
PLOT: 1=24		DATE: 04/02/08	
DATE	BY	REVISION DESCRIPTION	NO.
10/06/11	W.W.S.	A1 UPDATE TO CURRENT STANDARDS	B1
09/04/13	W.R.M.	C1 ADD NEW LOCK OPTIONS	C1
07/23/14	W.R.M.	D1 ADD LOCK OPTION 4	D1
06/11/15	W.W.S.	E1 CHANGE TO STATE ONLY APPROVAL	E1
06/28/16	W.W.S.	F1 UPDATE FOR WATER RATING	F1
DRAWING TITLE: 3501R 9' OUTSWING ALUMINUM STOREFRONT DOORS - LMI MANUFACTURER: KAWNEER COMPANY, INC. 555 GUTHRIDGE COURT NORCROSS, GA 30092 770-449-5555 CONSULTANTS: W. W. SCHAEFER ENGINEERING & CONSULTING, P.A. (CA 6809) 7480 150TH COURT NORTH PALM BEACH GARDENS, FL 33418 PHONE: 561-744-3424 CERTIFICATION: AUG 05 2021 WARREN W. SCHAEFER, P.E. P.E. NO. 44135			
DRAWING NO. 1569		REV. F	
SHEET NO. 1		OF 9	



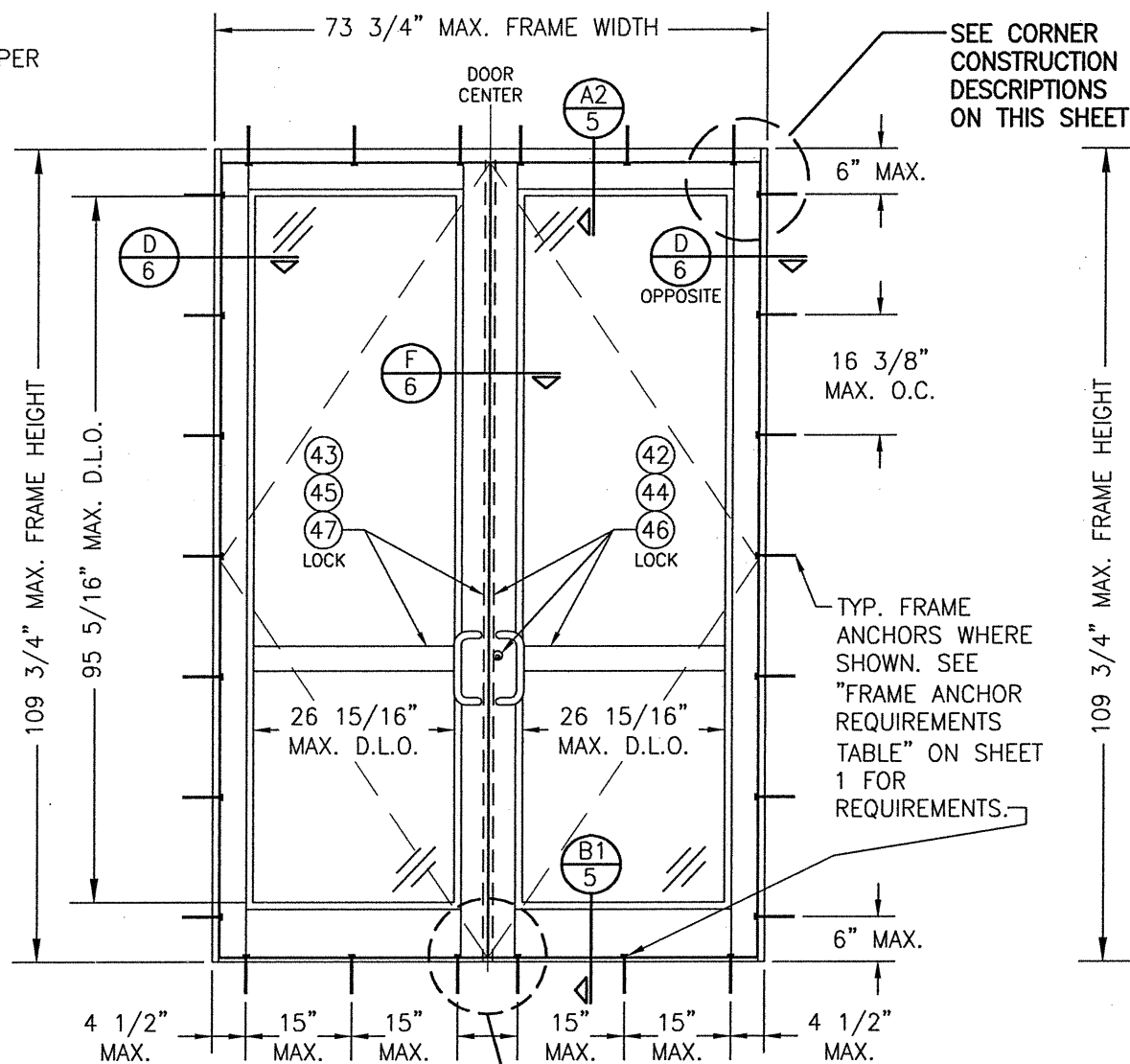
**MEETING STILE END CONNECTION
(ANCHOR TYPE C)**

(SILL CONDITION SHOWN; HEAD CONDITION IS SAME)



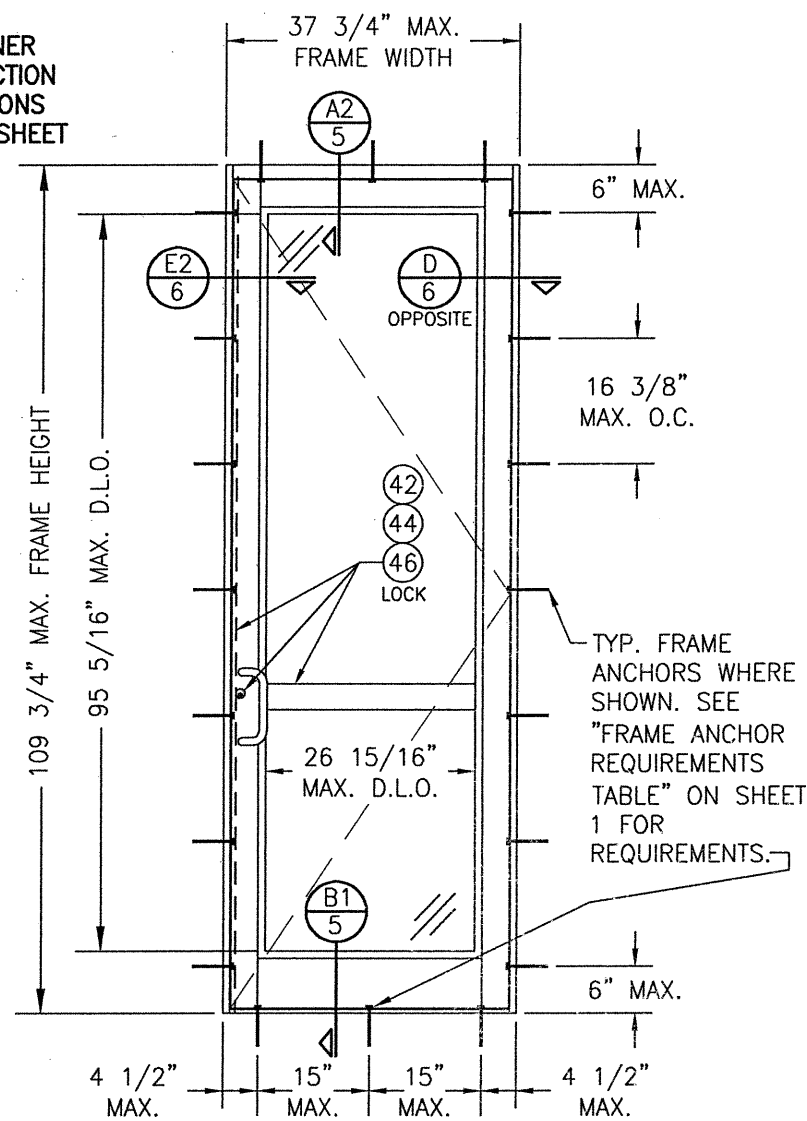
**MEETING STILE END CONNECTION
(ANCHOR TYPE A, B, D OR E)**

(SILL CONDITION SHOWN; HEAD CONDITION IS SAME)



**EXTERIOR ELEVATION:
DOUBLE DOOR WITH TRIFAB 450 FRAMING &
STANDARD INSTALLATION**

SCALE: 1/2" = 1'-0"
(APPLICABLE WITH ALL HINGE TYPES)



**EXTERIOR ELEVATION:
SINGLE DOOR WITH TRIFAB 450
FRAMING & STANDARD INSTALLATION**

SCALE: 1/2" = 1'-0"
(APPLICABLE WITH ALL HINGE TYPES)

LOCK OPTIONS 2, 3 & 4 ARE SHOWN IN THESE ELEVATIONS. LOCK OPTION 1 ALSO APPLIES. SEE ELEVATIONS ON SHEET 1 FOR LOCK OPTION 1.

ALLOWABLE DESIGN PRESSURE

+/-65 PSF

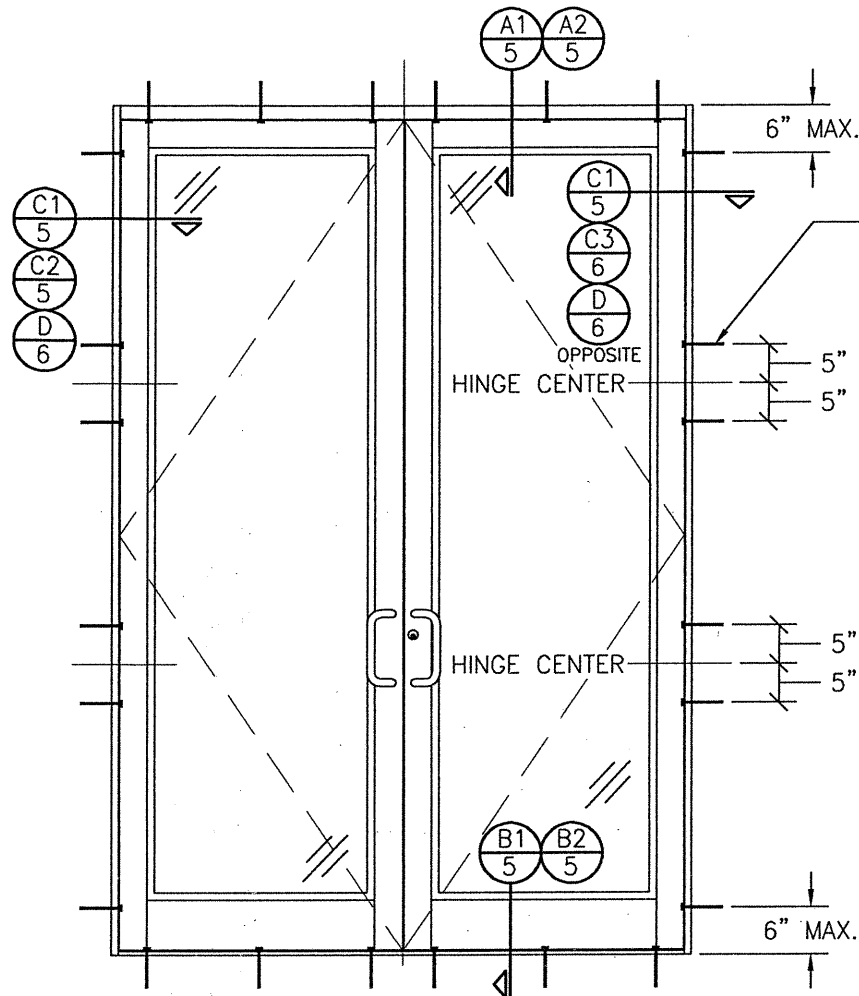
CORNER & FRAME END CONSTRUCTION FOR SHEET 2 ELEVATIONS:

FRAME HEAD CORNER: HEAD IS SQUARE CUT, BUTTED TO SIDE, SECURED WITH SHEAR BLOCK ITEM# 16 (SEE SECTION A2/5) & SEALED WITH SILICONE.

FRAME SILL CORNER: SILL IS SQUARE CUT, BUTTED TO SIDE, SECURED TO THE SIDE MEMBER USING A PIVOT ASSEMBLY OR STEEL CLIP, FASTENED WITH THREE (3) NO. 12-24 X 3/8" FHMS AT THE FRAME & TWO (2) NO. 12-24 X 3/8" FHMS AT THE SILL, & SEALED WITH SILICONE.

DOOR PANEL CORNERS & MIDRAIL ENDS: SEE SHEET 1 CORNER DESCRIPTIONS.

DRAWN BY: W.R.M.	CHECKED BY: W.W.S.
PLOT: 1=24	DATE: 04/02/08
NO.	REVISION DESCRIPTION
DATE	BY
<p>350IR 9' OUTSWING ALUMINUM STOREFRONT DOORS - LMI</p> <p>MANUFACTURER: KAWNEER COMPANY, INC. 555 GUTHRIDGE COURT NORCROSS, GA 30092 770-449-5555</p> <p>CONSULTANTS: W. W. SCHAEFER ENGINEERING & CONSULTING, P.A. (CA 6809) 7480 150TH COURT NORTH, 33418 PALM BEACH GARDENS, FL PHONE: 561-744-3424</p>	
CERTIFICATION	<p>AUG 05 2021</p> <p>WARREN W. SCHAEFER, P.E. P.E. NO. 44133</p>
DRAWING NO.	REV.
1569	F
SHEET NO.	
2	OF 9



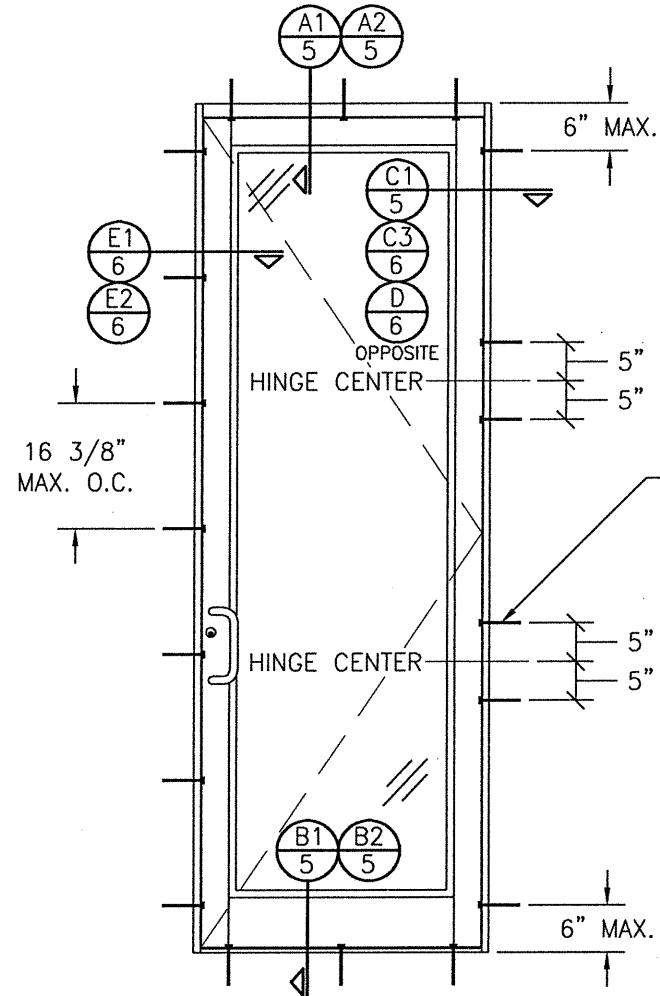
**EXTERIOR ELEVATION:
DOUBLE DOOR WITH ALTERNATE
INSTALLATION CONDITION**

SCALE: 1/2" = 1'-0"

(APPLICABLE WITH BUTT & PIVOT HINGE DOORS ONLY)
(FOR DOOR DETAIL & HARDWARE NOT SHOWN, SEE
ELEVATIONS ON SHEETS 1 & 2)

(ELEVATION SHOWN WITH TRIFAB 450 FRAMING.
IR-500/501 FRAMING ALSO APPLIES)

FRAME SCREWS
WHERE SHOWN
AT BOTH SIDES
OF HINGE
CENTER. SEE
"FRAME ANCHOR
REQUIREMENTS
TABLE" ON
SHEET 1 FOR
REQUIREMENTS.



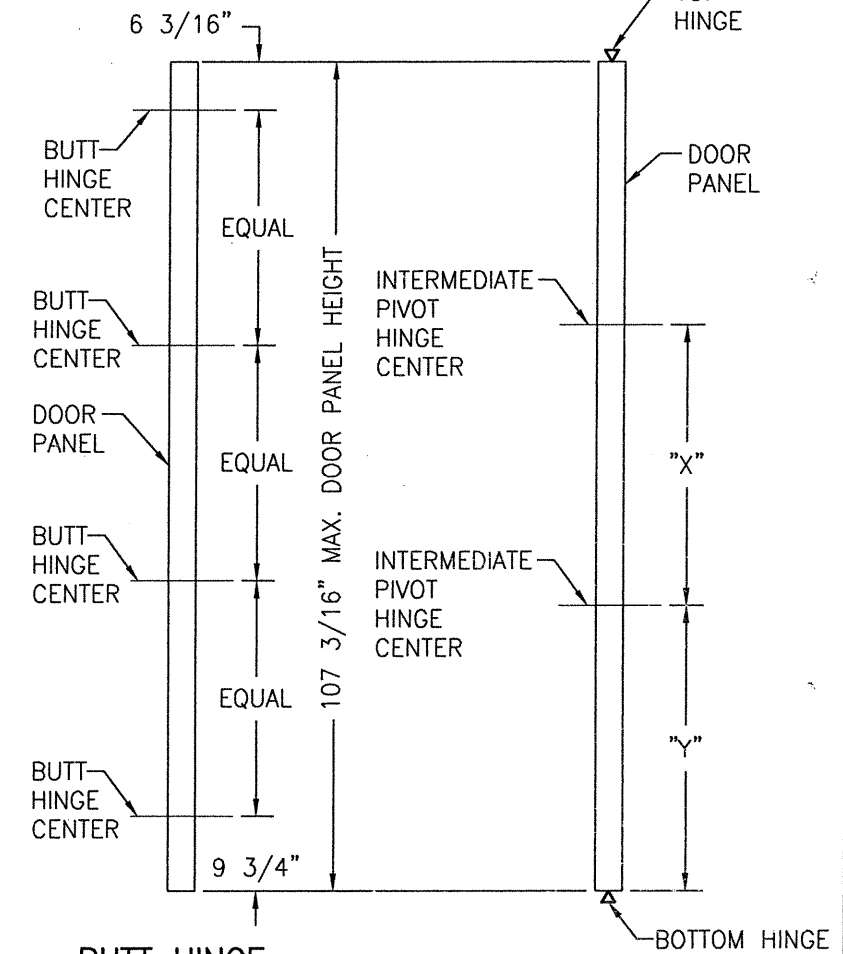
**EXTERIOR ELEVATION:
SINGLE DOOR WITH ALTERNATE
INSTALLATION CONDITION**

SCALE: 1/2" = 1'-0"

(APPLICABLE WITH BUTT & PIVOT HINGE DOORS ONLY)
(FOR DOOR DETAIL & HARDWARE NOT SHOWN, SEE
ELEVATIONS ON SHEETS 1 & 2)

(ELEVATION SHOWN WITH TRIFAB 450 FRAMING.
IR-500/501 FRAMING ALSO APPLIES)

FRAME SCREWS
WHERE SHOWN
AT BOTH SIDES
OF HINGE
CENTER. SEE
"FRAME ANCHOR
REQUIREMENTS
TABLE" ON
SHEET 1 FOR
REQUIREMENTS.

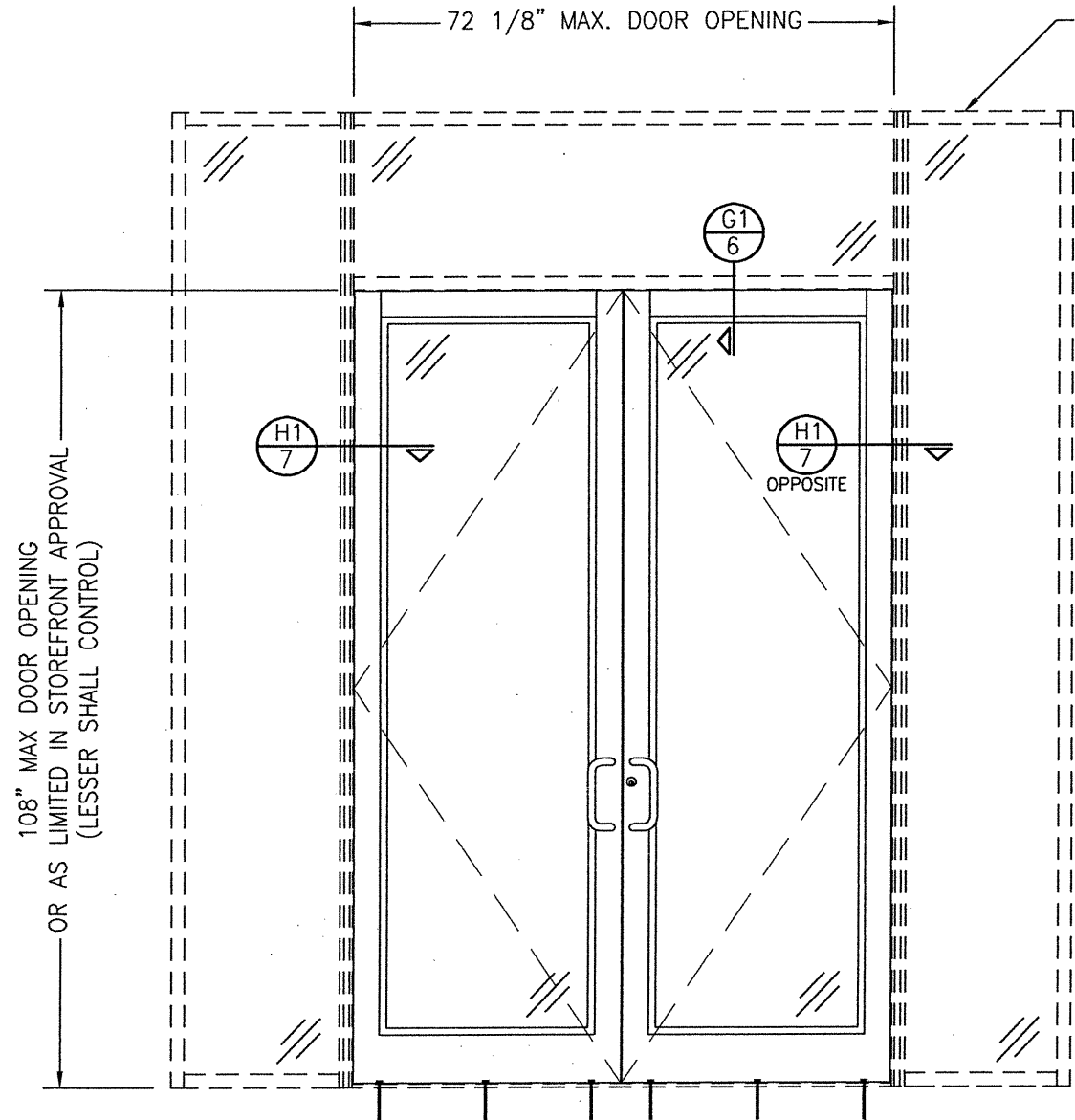


**BUTT HINGE
LOCATION DIAGRAM**
SCALE: 1/2" = 1'-0"

**PIVOT HINGE
LOCATION DIAGRAM**
SCALE: 1/2" = 1'-0"
"X" = DOOR PANEL
HEIGHT/2 - 17 3/8"
"Y" = "X" + 3/4"



DRAWN BY: W.R.M.	CHECKED BY: W.W.S.
PLOT: 1=24	DATE: 04/02/08
DATE	BY
REVISION DESCRIPTION	NO.
350IR 9' OUTSWING ALUMINUM STOREFRONT DOORS - LMI MANUFACTURER KAWNEER COMPANY, INC. 555 GUTHRIDGE COURT NORCROSS, GA 30092 770-449-5555	
CONSULTANTS W. W. SCHAEFER ENGINEERING & CONSULTING, P.A. (CA 6809) 7480 150TH COURT NORTH PALM BEACH GARDENS, FL 33418 PHONE: 561-744-3424	
CERTIFICATION AUG 05 2021 WARREN W. SCHAEFER, P.E. P.E. NO. 44135	
DRAWING NO. 1569	REV. F
SHEET NO. 3 OF 9	



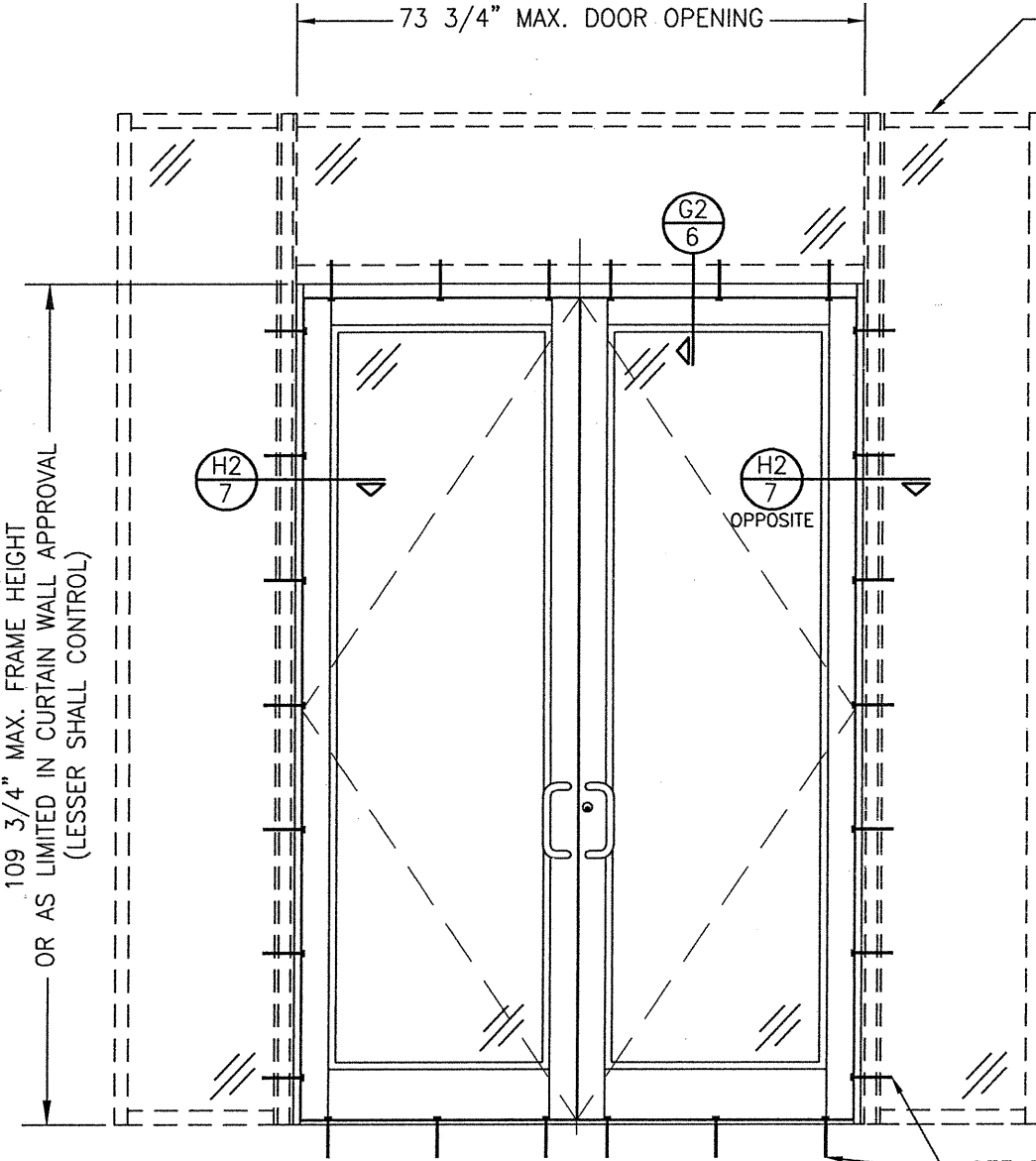
TRIFAB 450, IR-500 OR IR-501 STORE FRONT SYSTEM UNDER SEPERATE APPROVAL

108" MAX DOOR OPENING OR AS LIMITED IN STOREFRONT APPROVAL (LESSER SHALL CONTROL)

EXTERIOR ELEVATION
DOORS INSIDE TRIFAB 450, IR-500 OR IR-501 STORE FRONT SYSTEM

SCALE: 1/2"=1'-0"

SEE ELEVATIONS ON SHEET 1 OR 2 FOR SILL ANCHOR REQUIREMENTS & POSITIONS



1600 SYSTEM 1 CURTAIN WALL UNDER SEPERATE APPROVAL

109 3/4" MAX. FRAME HEIGHT OR AS LIMITED IN CURTAIN WALL APPROVAL (LESSER SHALL CONTROL)

EXTERIOR ELEVATION
DOORS INSIDE 1600 SYSTEM 1 CURTAIN WALL

SCALE: 1/2"=1'-0"

SEE ELEVATIONS ON SHEET 2 FOR FRAME ANCHOR REQUIREMENTS & POSITIONS AROUND DOORS

NOTES:

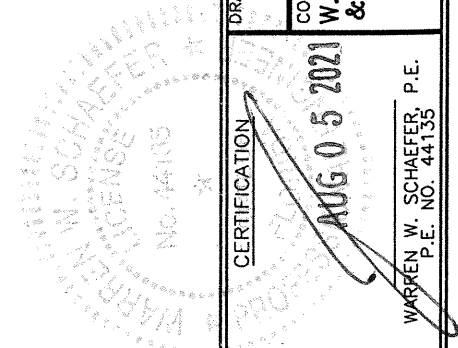
1. FOR DETAILS NOT SHOWN, SEE ELEVATIONS ON SHEETS 1 & 3.
2. DOUBLE DOOR SHOWN; SINGLE DOOR CONDITION ALSO APPLIES.
3. FOR STORE FRONT FRAMING REQUIREMENTS & INSTALLATION, SEE RESPECTIVE STORE FRONT APPROVAL.
4. LESSER ALLOWABLE PRESSURE RATING OF THE DOORS & STOREFRONT SHALL CONTROL FOR THE OVERALL ASSEMBLY.

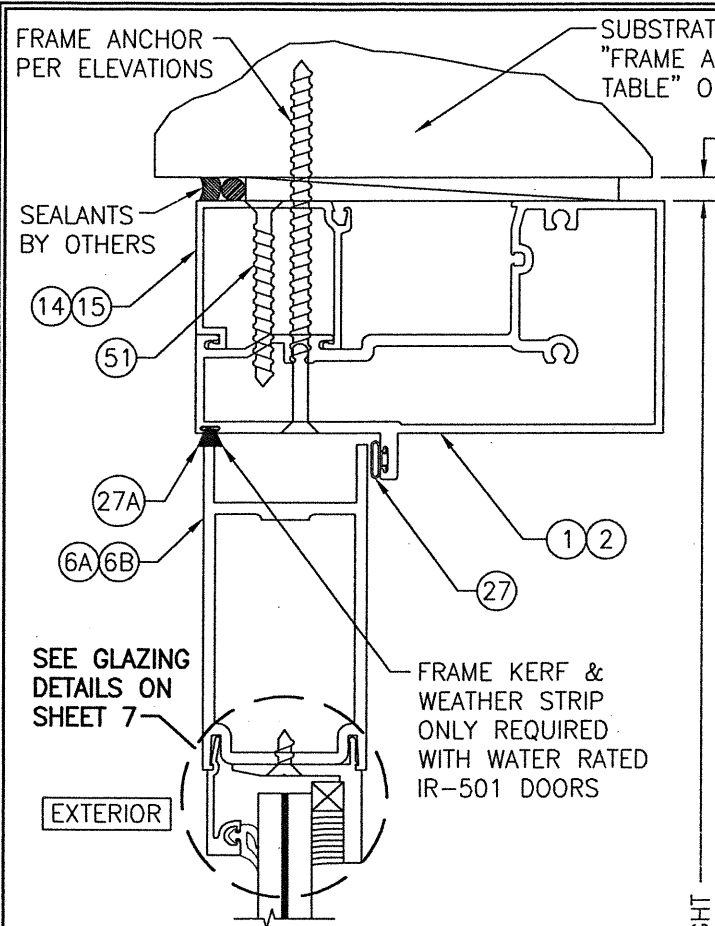
ALLOWABLE DESIGN PRESSURE
+/-65 PSF

NOTES:

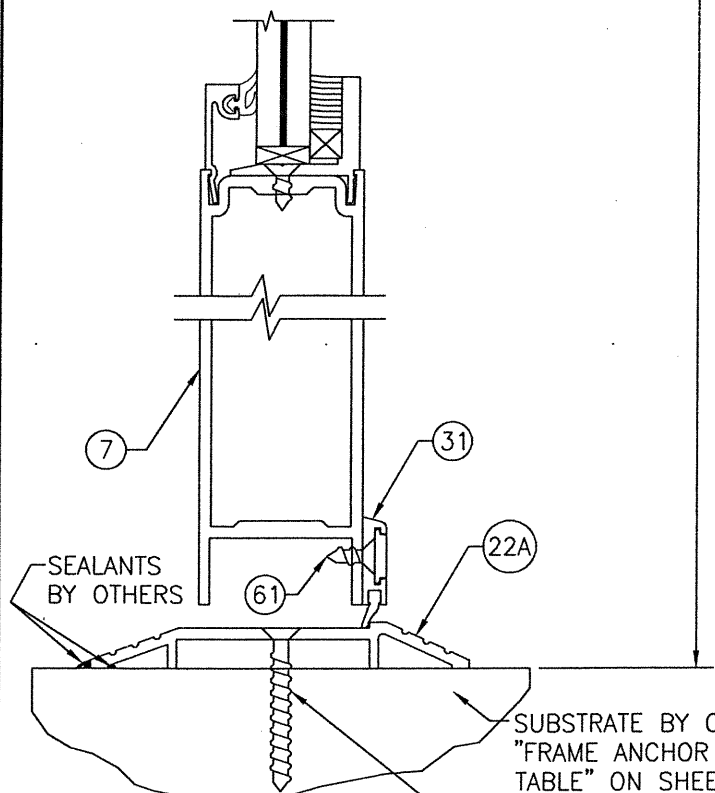
1. FOR DETAILS NOT SHOWN, SEE ELEVATIONS ON SHEETS 2 & 3.
2. DOUBLE DOOR SHOWN; SINGLE DOOR CONDITION ALSO APPLIES.
3. FOR STORE FRONT FRAMING REQUIREMENTS & INSTALLATION, SEE RESPECTIVE STORE FRONT APPROVAL.
4. LESSER ALLOWABLE PRESSURE RATING OF THE DOORS & STOREFRONT SHALL CONTROL FOR THE OVERALL ASSEMBLY.

DRAWN BY: W.R.M.		CHECKED BY: W.W.S.	
PLOT: 1=24		DATE: 04/02/08	
NO.	REVISION DESCRIPTION	BY	DATE
DRAWING TITLE 350IR 9' OUTSWING ALUMINUM STOREFRONT DOORS - LMI			
CONSULTANTS W. W. SCHAEFER ENGINEERING & CONSULTING, P.A. (CA 6809)			
MANUFACTURER KAWNEER COMPANY, INC.			
7480, 150TH COURT NORTH PALM BEACH GARDENS, FL 33418 PHONE: 561-744-3424			
P.E. NO. 44135 WARREN W. SCHAEFER, P.E.			
DRAWING NO. 1569		REV. F	
SHEET NO. 4		OF 9	



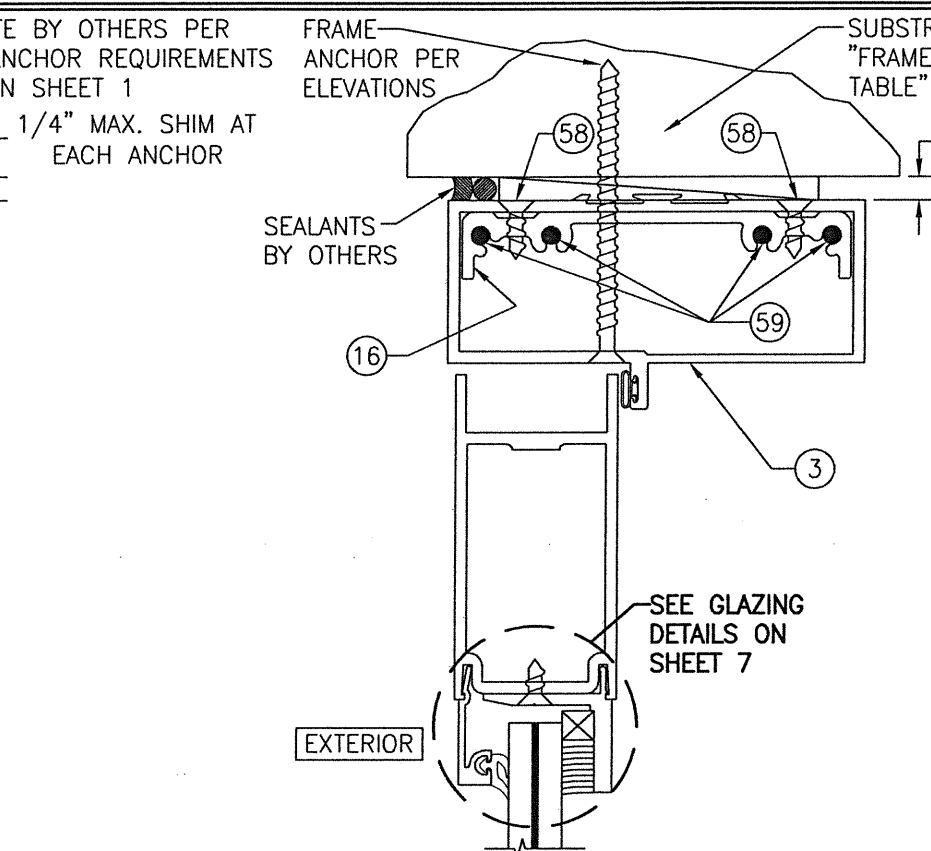


SECTION A1
SCALE: 1/2 FULL (WITH IR-500/501 FRAMING)

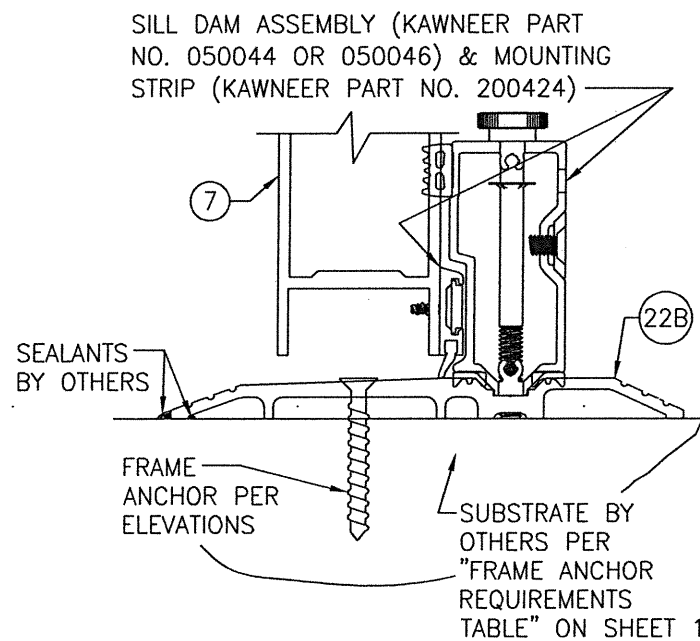


SECTION B1
SCALE: 1/2 FULL

FRAME HEIGHT

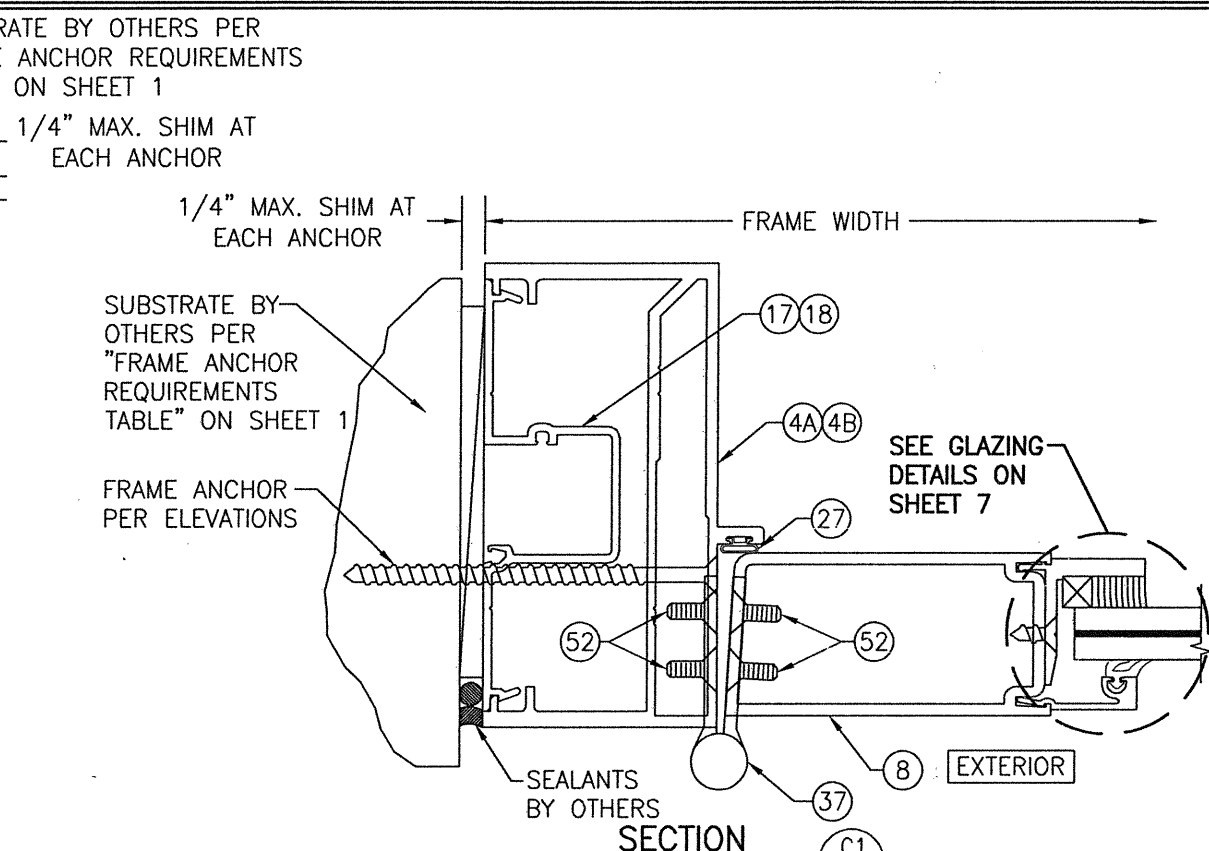


SECTION A2
SCALE: 1/2 FULL (WITH TRIFAB 450 FRAMING)
(FOR DETAIL NOT SHOWN, SEE SECTION A1/5)

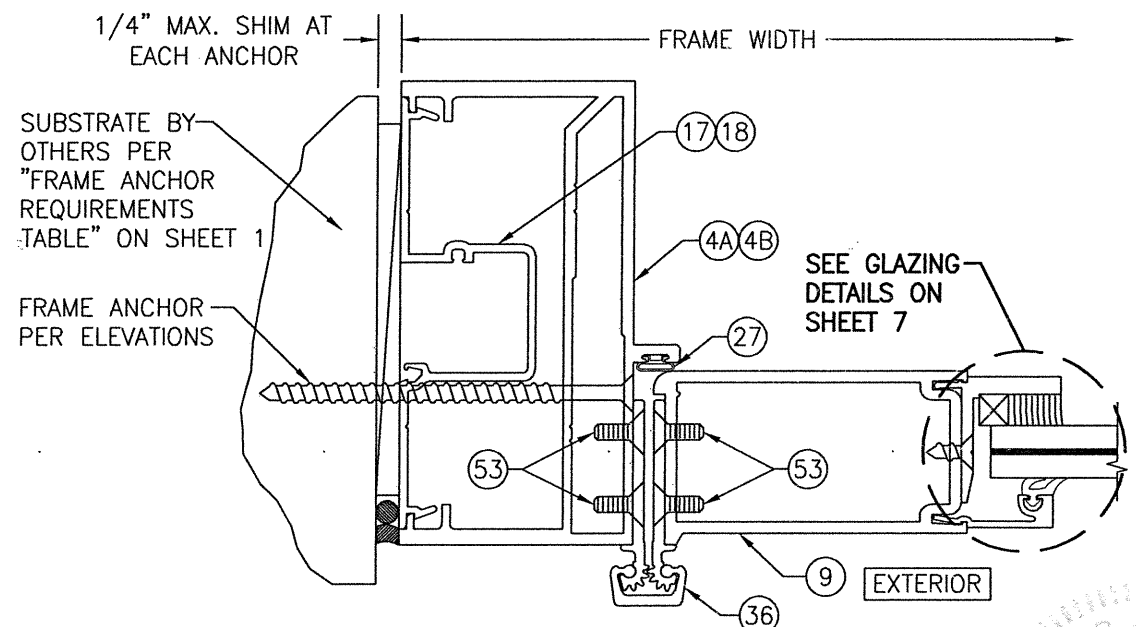


SECTION B2
SCALE: 1/2 FULL
NOTES: (SEE SECTION B1/5 FOR DETAIL NOT SHOWN)

- SILL 22B MAY BE USED WITH OR WITHOUT THE SILL DAM. WHEN WITHOUT THE DAM, A CAP IS PLACED OVER THE SILL RECESS. SILL IS WATER RATED ONLY WITH THE DAM ASSEMBLY & WHEN USED WITH THE IR-501 DOOR.
- IT SHALL BE THE DOOR OWNERS RESPONSIBILITY TO INSURE THE SILL DAM IS INSTALLED IN THE EVENT OF ANY MAJOR STORM.

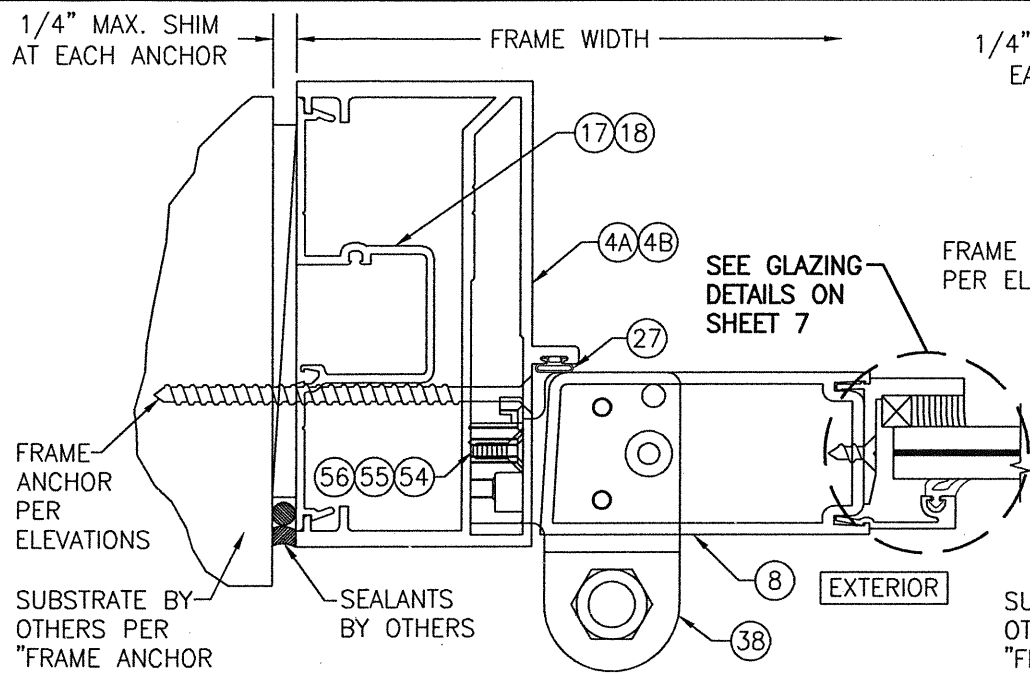


SECTION C1
SCALE: 1/2 FULL (WITH IR-500/501 FRAMING & BUTT HINGE CONDITION)

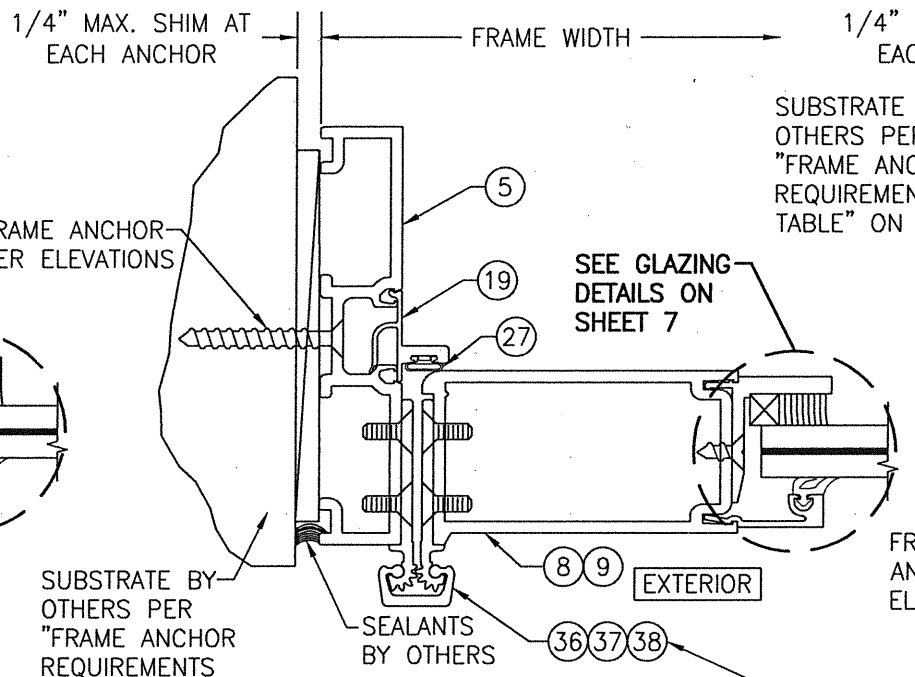


SECTION C2
SCALE: 1/2 FULL (WITH IR-500/501 FRAMING & GEAR HINGE CONDITION)

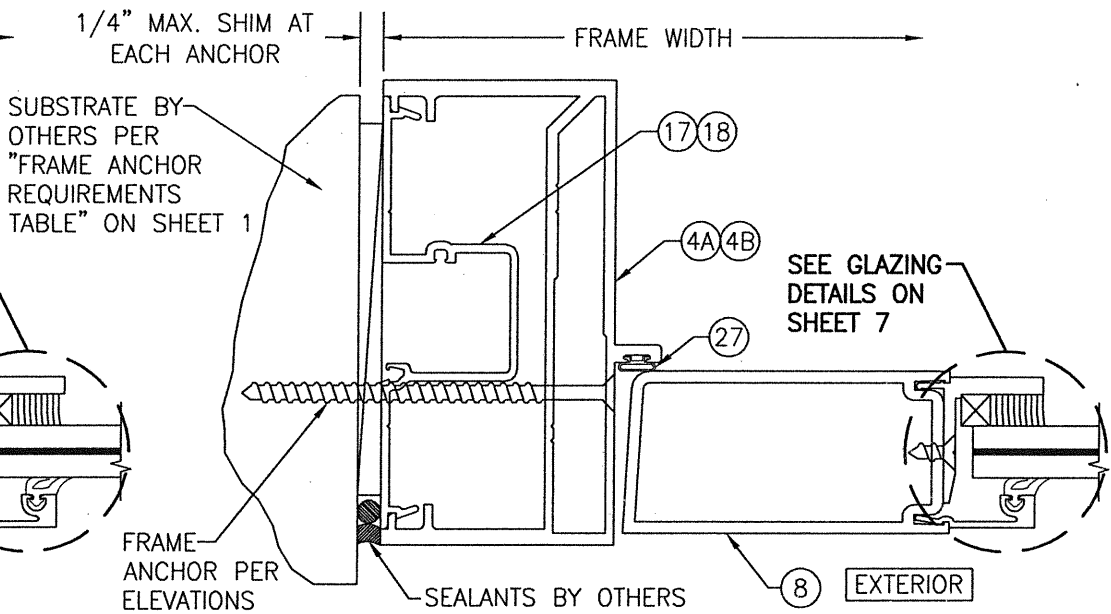
DRAWN BY: W.R.M.	CHECKED BY: W.W.S.
PLOT: 1-2	DATE: 04/02/08
DATE	
BY	
REVISION DESCRIPTION	
NO.	
DRAWING TITLE 350IR 9' OUTSWING ALUMINUM STOREFRONT DOORS - LMI	
MANUFACTURER KAWNEER COMPANY, INC. 555 GUTHRIDGE COURT NORCROSS, GA 30092 770-449-5555	
CONSULTANTS W. W. SCHAEFER ENGINEERING & CONSULTING, P.A. (CA 6809) 7480 150TH COURT NORTH PALM BEACH GARDENS, FL 33418 PHONE: 561-744-3424	
CERTIFICATION	AUG 05 2021
DRAWING NO. 1569	REV. F
SHEET NO. 5 OF 9	



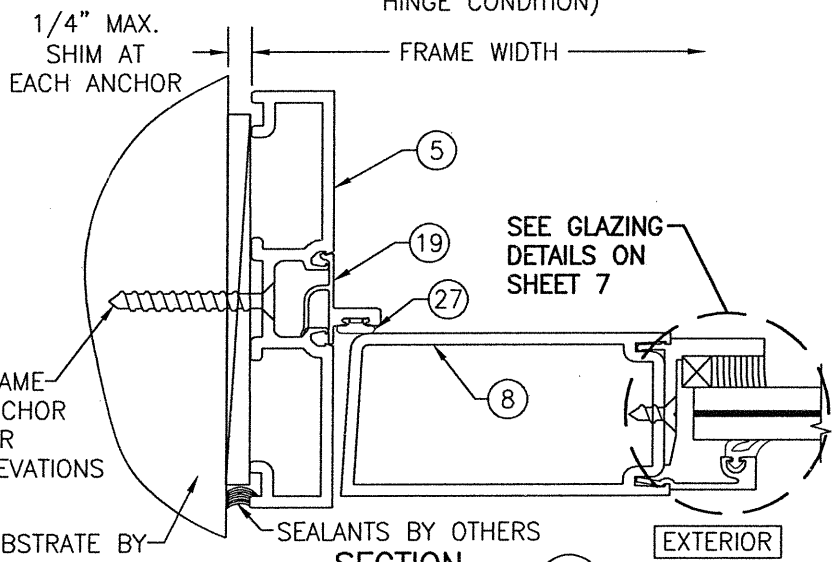
SECTION C3
SCALE: 1/2 FULL
(WITH IR-500/501 FRAMING & PIVOT HINGE CONDITION)



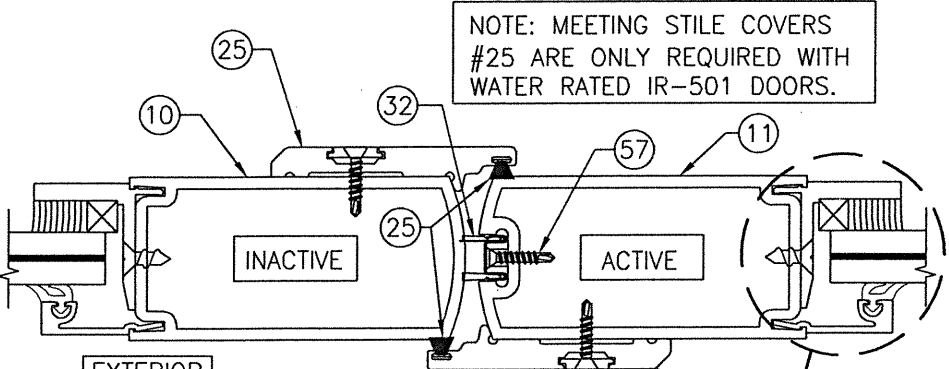
SECTION D
SCALE: 1/2 FULL
(WITH TRIFAB 450 FRAMING)
(GEAR HINGE CONDITION SHOWN; OTHER HINGES ARE APPLIED TO STANDARD FRAME SAME AS SHOWN IN SECTIONS C1/5 & C3/6 TO STOREFRONT FRAME)



SECTION E1
SCALE: 1/2 FULL
(WITH IR-500/501 FRAMING)

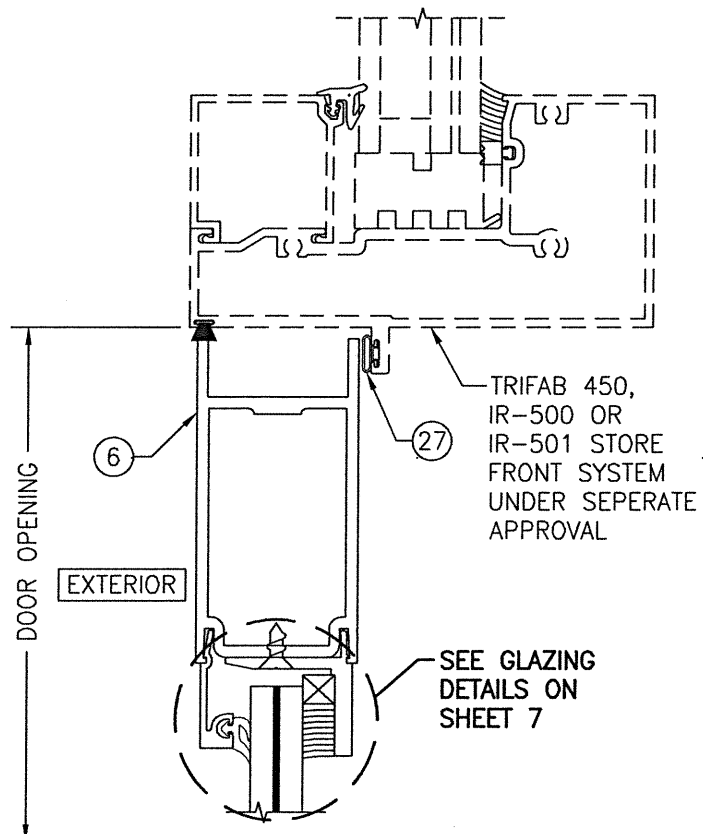


SECTION E2
SCALE: 1/2 FULL
(WITH TRIFAB 450 FRAMING)

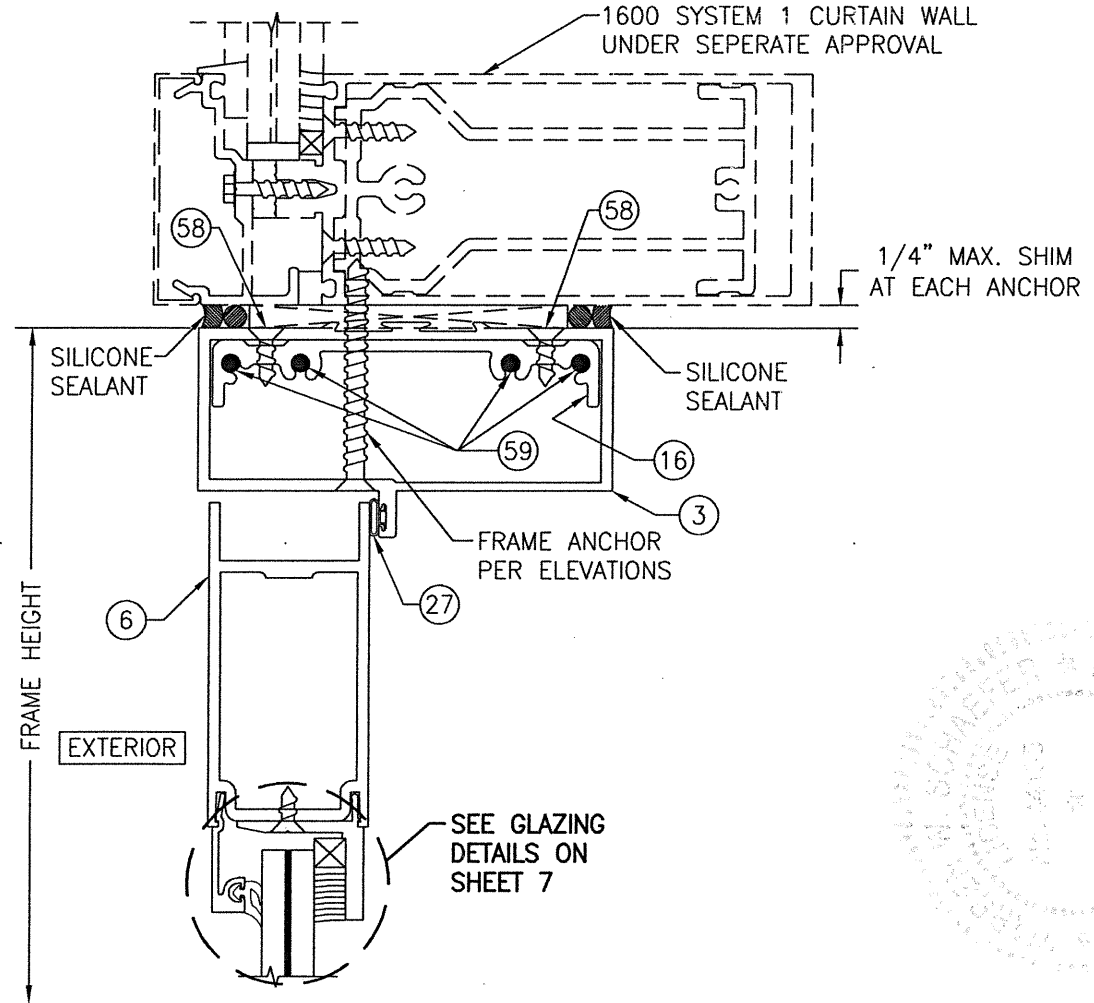


SECTION F
SCALE: 1/2 FULL

NOTE: MEETING STILE COVERS #25 ARE ONLY REQUIRED WITH WATER RATED IR-501 DOORS.

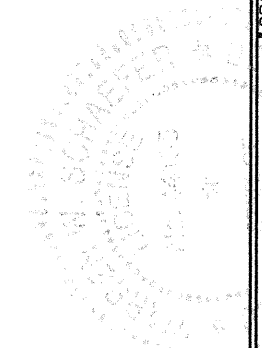


SECTION G1
SCALE: 1/2 FULL

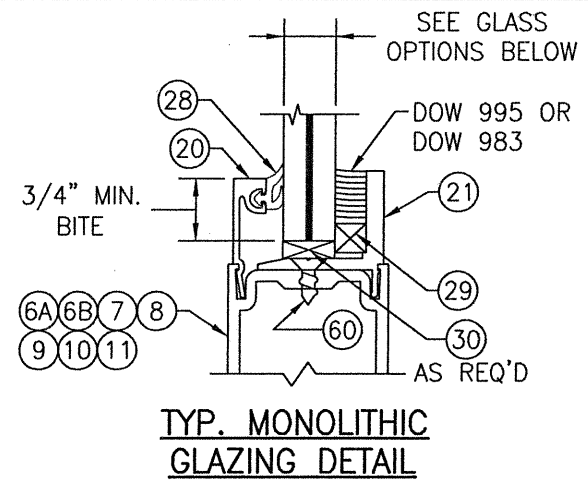
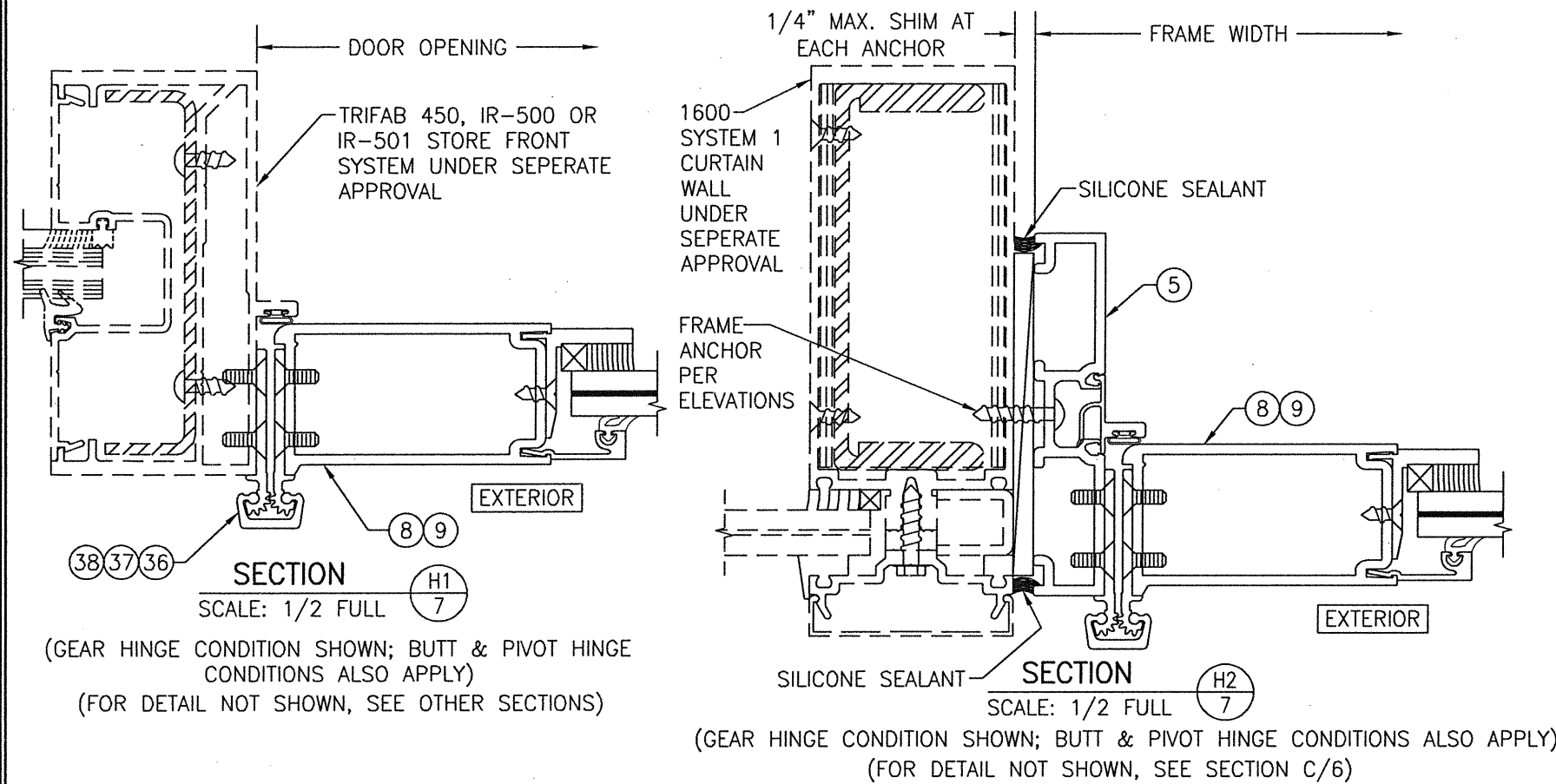


SECTION G2
SCALE: 1/2 FULL

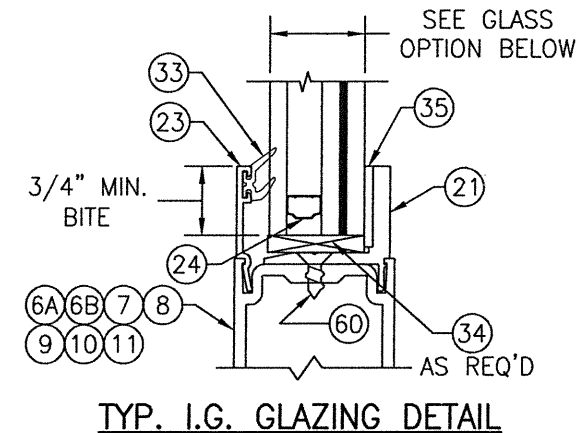
FOR HINGE & HINGE ATTACHMENT, SEE SECTIONS C1/5, C2/5 OR C3/6 FOR DETAIL



DRAWN BY: W.R.M.	CHECKED BY: W.W.S.
PLOT: 1=2	DATE: 04/02/08
DATE	
BY	
REVISION DESCRIPTION	
NO.	
DRAWING TITLE 350IR 9' OUTSWING ALUMINUM STOREFRONT DOORS - LMI	
MANUFACTURER KAWNEER COMPANY, INC. 555 GUTHRIE COURT NORCROSS, GA 30092 770-449-5555	
CONSULTANTS W. W. SCHAEFER ENGINEERING & CONSULTING, P.A. (CA 6809) 7480 150TH COURT NORTH PALM BEACH GARDENS, FL 33418 PHONE: 561-744-3424	
CERTIFICATION WARREN W. SCHAEFER, P.E. P.E. NO. 44135	
DRAWING NO. 1569	REV. F
SHEET NO. 6 OF 9	

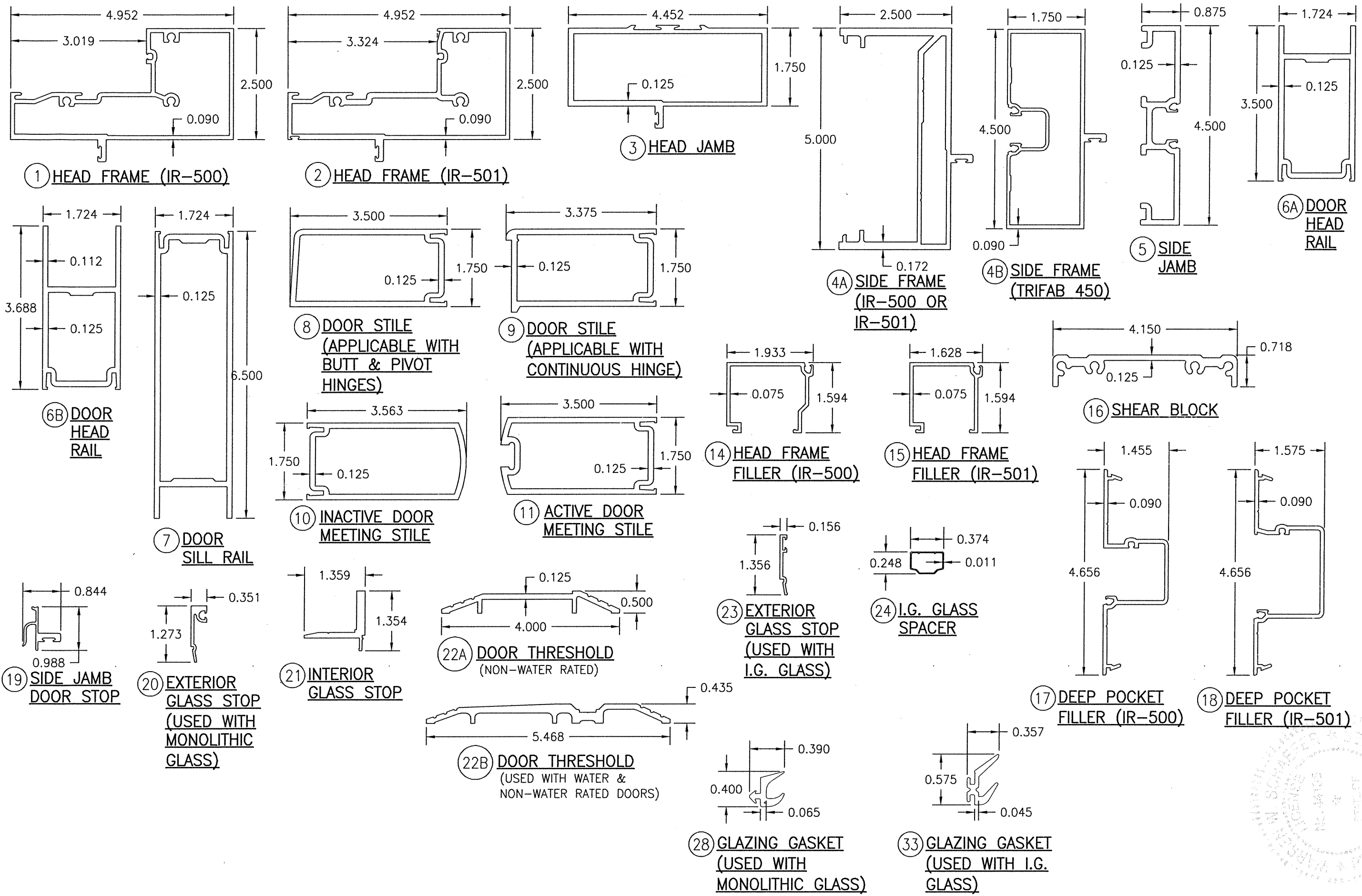


GLASS OPTIONS FOR MONOLITHIC GLASS:
 OPTION 1: 9/16" THICK LAMINATED GLASS (1/4" HT. ST./0.100 EASTMAN CHEMICAL CO. SAFLEX/1/4" HT. ST.)
 OPTION 2: 9/16" THICK LAMINATED GLASS (1/4" HT. ST./0.090 EASTMAN CHEMICAL CO. SAFLEX/1/4" HT. ST.)



GLASS OPTIONS FOR IG GLASS:
 OPTION 3: 1" THICK I.G LAMINATED GLASS (3/16" TEMP EXTERIOR; 3/8" AIR SPACE; 3/16" HT. ST./0.090" KURARAY (PREVIOUSLY DUPONT) SG/3/16" HT. ST. INTERIOR)

DRAWN BY: W.R.M.	CHECKED BY: W.W.S.
PLOT: 1=2	DATE: 04/02/08
DATE	
BY	
REVISION DESCRIPTION	
NO.	
DRAWING TITLE 350IR 9' OUTSWING ALUMINUM STOREFRONT DOORS - LMI	
CONSULTANTS W. W. SCHAEFER ENGINEERING & CONSULTING, P.A. (CA 6809) 7480 150TH COURT NORTH PALM BEACH GARDENS, FL 33418 PHONE: 561-744-3424	MANUFACTURER KAWNEER COMPANY, INC. 555 GUTHRIDGE COURT NORCROSS, GA 30092 770-449-5555
CERTIFICATION AUG 05 2021 WARREN W. SCHAEFER, P.E. P.E. NO. 44135	
DRAWING NO. 1569	REV. F
SHEET NO. 7	OF 9



DRAWN BY: W.R.M.		CHECKED BY: W.W.S.	
PLOT: 1=2		DATE: 04/02/08	
NO.	REVISION DESCRIPTION	DATE	BY
DRAWING TITLE 350IR 9' OUTSWING ALUMINUM STOREFRONT DOORS - LMI			
MANUFACTURER KAWNEER COMPANY, INC. 555 GUTHRIDGE COURT NORCROSS, GA 30092 770-449-5555			
CONSULTANTS W. W. SCHAEFER ENGINEERING & CONSULTING, P.A. (CA 6809) 7480 150TH COURT NORTH PALM BEACH GARDENS, FL 33418 PHONE: 561-744-3424			
CERTIFICATION AUG 05 2021 WARREN W. SCHAEFER, P.E. P.E. NO. 44135			
DRAWING NO. 1569		REV. F	
SHEET NO. 8 OF 9			

ITEM #	PART #	ITEM DESCRIPTION	MANUFACTURER/NOTES
PARTS			
1	575-022	HEAD FRAME (IR-500)	6063-T6 ALUMINUM
2	575-122	HEAD FRAME (IR-501)	6063-T6 ALUMINUM
3	450-502	HEAD JAMB	6063-T6 ALUMINUM
4A	575-051	SIDE FRAME (IR 500-OR IR-501)	6063-T6 ALUMINUM
4B	450-501	SIDE FRAME (TRIFAB 450)	6063-T6 ALUMINUM
5	163-036	SIDE FRAME (1600 DR JB ADAPTOR)	6063-T6 ALUMINUM
6A	200-023	DOOR; TOP RAIL	6063-T6 ALUMINUM
6B	200-024	DOOR; TOP RAIL	6063-T6 ALUMINUM
7	200-032	DOOR; BOTTOM RAIL	6063-T6 ALUMINUM
8	200-005	DOOR STILE (APPLICABLE WITH BUTT & PIVOT HINGES)	6063-T6 ALUMINUM
9	200-012	DOOR STILE (APPLICABLE WITH CONTINUOUS HINGES)	6063-T6 ALUMINUM
10	200-007	INACTIVE DOOR MEETING STILE	6063-T6 ALUMINUM
11	200-006	ACTIVE DOOR MEETING STILE	6063-T6 ALUMINUM
14	575-004	HEAD FRAME FILLER (IR-500)	6063-T6 ALUMINUM
15	575-104	HEAD FRAME FILLER (IR-501)	6063-T6 ALUMINUM
16	450-103	SHEAR BLOCK	6063-T6 ALUMINUM
17	575-035	DEEP POCKET FILLER (IR-500)	6063-T6 ALUMINUM
18	575-135	DEEP POCKET FILLER (IR-501)	6063-T6 ALUMINUM
19	450-520	SIDE JAMB DOOR STOP	6063-T6 ALUMINUM
20	575-043	EXTERIOR GLASS STOP (USED WITH MONOLITHIC GLASS)	6063-T6 ALUMINUM
21	575-045	INTERIOR GLASS STOP	6063-T6 ALUMINUM
22A	069-139	DOOR THRESHOLD (NON-WATER RESISTANCE RATED)	6063-T6 ALUMINUM
22B	069-301	DOOR THRESHOLD (WATER RESISTANCE RATED WITH DAM)	6063-T6 ALUMINUM
23	575-040	EXTERIOR GLASS STOP (USED WITH I.G. GLASS)	6063-T6 ALUMINUM
24	-	I.G. GLASS SPACER	3005 OR 3105 ALUMINUM
25	050-044	C09 MEETING STILE COVER FOR WATER RATED DOOR	MATERIAL VARIES
SEALS AND SEALANTS			
27	027-078	DOOR BULB WEATHERING	ALCRYN
27A	027-474	.210 PILE WEATHERSTRIP	PVC UNPLASTICIZED
28	027-563	GLAZING GASKET (USED WITH MONOLITHIC GLASS)	TREMCO TR-13536E EPDM DUROMETER 70 +/-5
29	127-041	GLAZING TAPE / SILICONE SPACER	SEMI-RIGID POLYURETHANE FOAM
30	027-342	SETTING BLOCK (USED WITH MONOLITHIC GLASS)	NEOPRENE
31	200-795	DOOR BOTTOM RAIL WEATHER SWEEP	VARIED
32	200-497	ADJUSTABLE ASTRAGAL WEATHERING	VARIED
33	027-557	GLAZING GASKET (USED WITH I.G. GLASS)	KRP 027-557 POLYPROPYLENE & SANTOPRENE DUROMETER 65 +/-5
34	027-059	SETTING BLOCK (USED WITH I.G. GLASS)	NEOPRENE
35	200-948	GLAZING TAPE (USED WITH I.G. GLASS)	3M VHB
HARDWARE			
36	050-821	CONTINUOUS GEAR HINGE	BY HAGER/ROTON, STANLEY OR ABH
37	037-264	BUTT HINGE	BY HAGER, STANLEY OR MCKINNEY
38	050-322	TOP OFFSET PIVOT HINGE	BY KAWNEER
	050-331	INTERMEDIATE OFFSET PIVOT HINGE	
	050-326	RH BOTTOM OFFSET PIVOT HINGE	
	050-327	LH BOTTOM OFFSET PIVOT HINGE	

ITEM #	PART #	ITEM DESCRIPTION	MANUFACTURER/NOTES
HARDWARE			
39	3-POINT	LOCK ASSEMBLY FOR ACTIVE DOOR (APPLICABLE AS PART OF LOCK OPTION 1)	ADAMS-RITE 1850
	50-075	BOLT GUIDE	
	50-078	TOP BOLT	
	50-100	DEADLOCK	
	37-368	BOTTOM BOLT	
	35-001	CYLINDER	BY KAWNEER
	37-176	THUMBTURN	
	137-700	CO-9 PUSH / CP-II PUSH PACKAGE	
40	50-079	INACTIVE DOOR TOP FLUSH BOLT (APPLICABLE AS PART OF LOCK OPTION 1)	ADAMS-RITE 1850
41	50-075	INACTIVE DOOR BOTTOM FLUSH BOLT (APPLICABLE AS PART OF LOCK OPTION 1)	ADAMS-RITE 1850
42	-	LOCK ASSEMBLY/CVR PANIC DEVICE FOR ACTIVE DOOR (APPLICABLE AS PART OF LOCK OPTION 2)	VON DUPRIN HH9947
		DEADBOLT/CYLINDER	SCHLAGE 037304
43	-	LOCK ASSEMBLY/PANIC DEVICE FOR INACTIVE DOOR (APPLICABLE AS PART OF LOCK OPTION 2)	VON DUPRIN HH9947
44	-	LOCK ASSEMBLY/CVR PANIC DEVICE FOR ACTIVE DOOR (APPLICABLE AS PART OF LOCK OPTION 3)	FALCON HH1690
		DEADBOLT/CYLINDER	SCHLAGE 037304
45	-	LOCK ASSEMBLY/PANIC DEVICE FOR INACTIVE DOOR (APPLICABLE AS PART OF LOCK OPTION 3)	FALCON HH1690
46	-	LOCK ASSEMBLY/CVR PANIC DEVICE FOR ACTIVE DOOR (APPLICABLE AS PART OF LOCK OPTION 4)	KAWNEER 1686
		DEADBOLT/CYLINDER	SCHLAGE 037304
47	-	LOCK ASSEMBLY/PANIC DEVICE FOR INACTIVE DOOR (APPLICABLE AS PART OF LOCK OPTION 4)	KAWNEER 1686
MISCELLANEOUS FASTENERS			
51	-	NO. 12 X 2" SCREW	3" FROM ENDS & MAX. 11" O.C.
52	-	NO. 12-24 X 9/16" S.S. SCREW	8 PER HINGE
53	-	NO. 12-24 X 13/32" SCREW	2 9/16" FROM ENDS & MAX. 5 1/8" O.C. (52 MAX. PER HINGE)
54	-	5/16"-18 X 5/8" SCREW	2 PER TOP PIVOT HINGE
55	-	NO. 12-24 X 9/16" S.S. SCREW	2 PER INTERMEDIATE PIVOT HINGE
56	-	1/4-20 X 3/8" SCREW	3 PER BOTTOM PIVOT HINGE
57	-	NO. 6 X 11/16" SCREW	10 PER LEAF
58	-	NO. 10 X 9/16" S.S. SCREW	2 PER CLIP
59	-	NO. 10 X 1 9/32" S.S. SCREW	4 PER CLIP
60	-	NO. 10 X 1/2" S.S. SCREW	3" FROM ENDS & MAX. 7 1/2" O.C. AT TOP & BOTTOM RAILS - 3" FROM ENDS & MAX. 11 1/8" O.C. AT STILES
61	-	NO. 6 X 3/8" S.S. SCREW	1/4" FROM ENDS & MAX. 9 17/32" O.C.

DRAWN BY: W.R.M.	CHECKED BY: W.W.S.
PLOT: 1=2	DATE: 04/02/08
DATE	
BY	
REVISION DESCRIPTION	
NO.	
DRAWING TITLE 350IR 9' OUTSWING ALUMINUM STOREFRONT DOORS - LMI	
MANUFACTURER KAWNEER COMPANY, INC. 555 GUTHRIDGE COURT NORCROSS, GA 30092 770-449-5555	
CONSULTANTS W. W. SCHAEFER ENGINEERING & CONSULTING, P.A. (CA 6809) 7480 150TH COURT NORTH PALM BEACH GARDENS, FL 33418 PHONE: 561-744-3424	
CERTIFICATION AUG 05 2021 WARREN W. SCHAEFER, P.E. P.E. NO. 44135	
DRAWING NO. 1569	REV. F
SHEET NO. 9	OF 9